

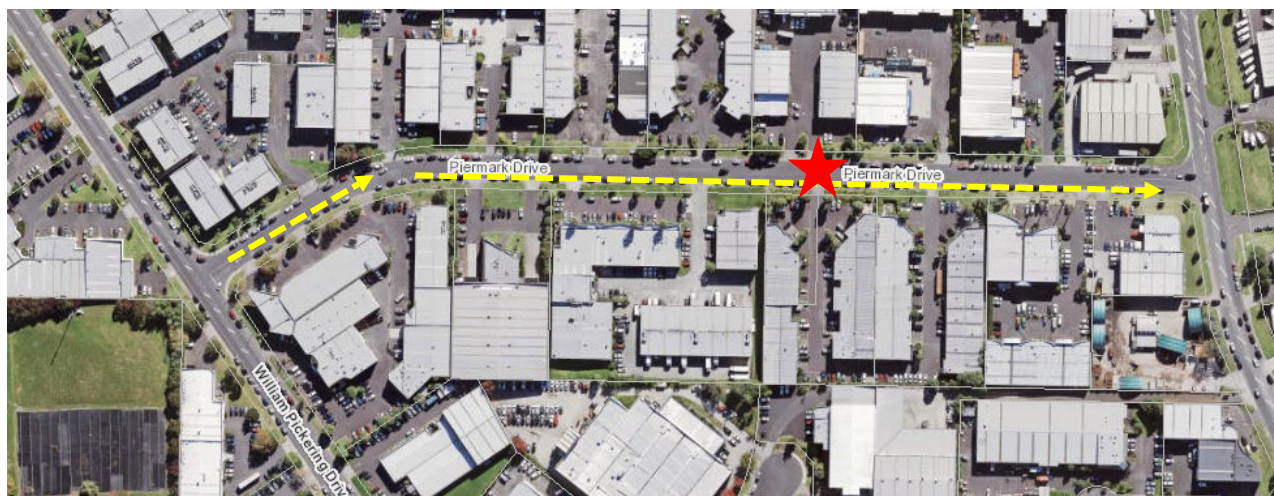


3 July 2019

Dear Neighbour

### **Improving your wastewater network: Northern Interceptor wastewater pipe construction Piermark Drive - Update on works**

Further to our letter in October last year, we wish to update you on our works on Piermark Drive. We are planning to recommence works in the area indicated by a red star in the graphic below on approximately 16 July. Works will run through until late August/early September. As was implemented last year, Piermark Drive will become a one-way road for the remainder of the works, flowing from towards Bush Road. This is indicated by the yellow dashed line in the graphic below. Traffic congestion will be monitored during works to ensure that traffic continues to flow. If issues arise, we will temporarily revert to a two-way system to clear traffic and then return to the one-way system once congestion is cleared.



#### **A reminder on how these works may affect you?**

- A no parking area will be imposed in the vicinity of the working area.
- The wastewater pipe will be installed along the right-hand side of Piermark Drive, looking towards Bush Road.
- Traffic will be monitored during works to ensure that traffic continues to flow. If issues arise, we will temporarily revert to a two-way system to clear traffic and then return to the one-way system once congestion is cleared.
- Working hours will typically be from 7.00am to 6.00pm on Monday to Friday, and from 8.00am to 5.00pm on Saturdays. Where additional works are required outside of these hours, we will notify you in advance.
- Increased truck movements during construction hours.
- Please follow instructions from traffic management personnel. They will assist you should you have any issues with access to your property. **Please advise if you have any specific requirements that need to be taken into account.**

We apologise for any inconvenience this may cause and thank you for your patience as we aim to complete this work quickly with as little disruption as possible.

**Any questions?**

If you have any questions regarding these works, please email me at [Nlproject@water.co.nz](mailto:Nlproject@water.co.nz) or phone me directly on 021607774. Watercare's Customer Services team are available at [info@water.co.nz](mailto:info@water.co.nz) or on (09) 442 2222, Monday to Friday, 7.30am to 6.00pm (except public holidays).

Yours sincerely

A handwritten signature in black ink that reads "C. Donnelly". The signature is written in a cursive, flowing style.

Claire Donnelly  
Stakeholder Manager  
The Fletcher Construction Company Limited  
On behalf of Watercare Services Limited