

5 April 2022

## Rosedale Bridge

### Night Works Notification

Dear neighbour

I am writing to let you know we are scheduled to be working at night on Rosedale Road Motorway Bridge Monday 11 through to Thursday 28 April (excluding Friday and Saturday nights). Hours of work are typically 8pm to 5am. If we are delayed by weather or unforeseen circumstances, work will roll to the next available night.

#### What are we doing?

We are lowering the existing footpath on the south side of Rosedale Road underneath Rosedale Bridge and placing large pre-cast panels on Rosedale Road Motorway Bridge south abutment.

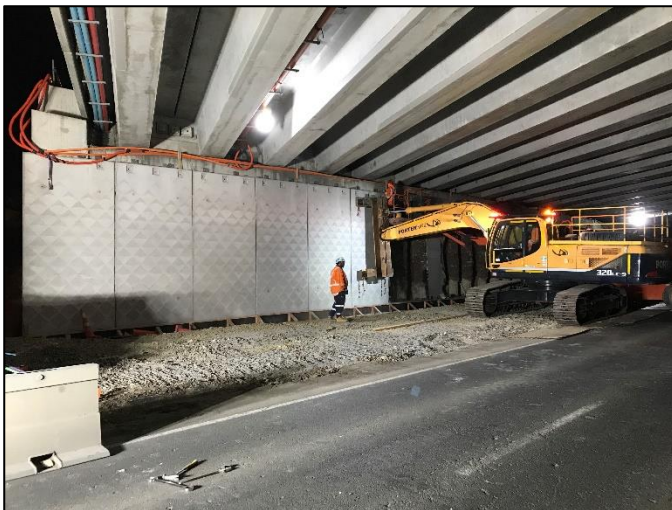


Photo left: Precast panels previously placed on the north abutment

#### What this means for you

Our work has been carefully planned to keep disruption to a minimum; however, there will be some noise, heavy machinery and trucks moving. Rosedale Road will be closed between Tawa Drive and Triton Drive with detours in place. We apologise in advance for any disruption our works may cause.

#### Further Information?

If you would like to learn more about the NCI project, please contact our Community Engagement Manager Emma Cushnie by email [emma.cushnie@northerncorridor.co.nz](mailto:emma.cushnie@northerncorridor.co.nz) or by phone on 027 532 4305.