

In this edition of YOUR news

- [An Unexpected Challenge](#)
- [Can You Help A Business That Has Been Affected By The Flood?](#)
- [Upcoming Workshops & Events](#)
- [Applications Invited For The BNH Leadership And Business Mentoring Programme](#)
- [Latest Information From business.govt.nz](#)
- [Latest Information From Tātaki Auckland Unlimited](#)
- [Retail NZ Crime Hub](#)
- [Two New Pedestrian Crossings On Paul Matthews Road](#)

An Unexpected Challenge

Business
North
Harbour

CONNECT. COMMUNICATE. COLLABORATE.

Kia ora tatou,

The recent unprecedented weather events have thrown up another significant challenge for members whose business and / or property have been adversely affected by the flooding. I believe that the majority of members have thankfully managed to avoid the devastation, but unfortunately there are some members who haven't been so lucky. Below are some useful links to help you through the current situation which I hope may be of use.

There is a Business Helpline **0800 500 362** and the Auckland Emergency Management and Civil Defence information contains advice on a wide range of topics including cleaning up after a flood, waste disposal and much more, or you may qualify for a Civil Defence or Auckland Mayoral Fund payment.

Useful links:

[Auckland Council Emergency Relief Fund](#)[Auckland Emergency Management website](#)[Auckland Region Flood](#)[Auckland road closures and information](#) (Auckland Transport)[ANZ, ASB, BNZ, Kiwibank](#), (Bank Support)[Civil Defence Payment](#)[Civil Defence Fact Sheet](#)[Employment during and after disasters](#)[Extreme weather: Information for businesses](#)[Information about flood-damaged building inspections](#)[MetService weather warnings](#)[State Highway road closures](#) (NZTA)[State of local emergency for Auckland](#)**0800 22 22 00** (Auckland Council)**0800 500 362** (The Business Help Line)

If you are running a business in rented premises and you have been affected, you may have to have a conversation with your landlord regarding any insurance claim to clarify any confusion regarding who is responsible for what. Generally speaking, damage to the property should be covered by the landlord's insurance and any damage to stock and other contents should be covered by the business' insurance, but you may need to confirm your individual arrangements between the affected parties.

At BNH we will endeavour to keep you updated with the latest updates and information via our [website](#) and social media channels ([Facebook](#), [LinkedIn](#)).

I trust that the information provided above is of use and hope that you stay safe and can avoid any further damage and disruption moving forwards, but if you have been affected, please don't hesitate to contact BNH if you think that we can be of any assistance.

Ngā mihi mahana,

Kevin O'Leary

General Manager, Business North Harbour

Can You Help A Business That Has Been Affected By The Flood?

Several of our Businesses have been affected by the flooding, spanning throughout our BiD and out as far as Wairau. These businesses are seeking alternative locations for **storage, warehousing and office space**.

If you may be able to help out a fellow business with temporary storage or warehousing, or should you need assistance with finding new premises, please contact Sarah De Zwart at sarah@businessnh.org.nz

Upcoming Workshops & Events

Business
North
Harbour

bnz

NORTH HARBOUR
ASIAN BUSINESS GROUP

LUNAR NEW YEAR
CELEBRATION

THE YEAR OF THE RABBIT

All BNH members are invited to welcome the Year of the Rabbit and experience the rich culture of the Lunar New Year Celebrations.

TUESDAY 7 FEBRUARY | 12.00–2.00pm

Last Call

North Harbour Asian Business Group

Lunar New Year Celebration

Tuesday 7th February, 12pm-2pm

Proudly sponsored by BNZ

Business North Harbour and BNZ invite you to join us to welcome the Year of the Rabbit. The rabbit is known to be the luckiest of the twelve animals. It symbolizes longevity, peace, and prosperity. Join us for a celebratory luncheon hosted by Business North Harbour at the BNZ Partners Centre.

This is also an opportunity to network and celebrate this special occasion with other BNH members from the North Shore Asian Business Group.

We welcome all BNH members to join the event to experience the rich culture of the Lunar New Year Celebrations. [Register here.](#)

Business
North
Harbour

PROUDLY SPONSORED BY
PATHFINDER
SOLUTIONS
Chartered Accountants & Advisors

Auckland
Emergency Management

Auckland
Council

BUSINESS CAPABILITY WORKSHOP

**EMERGENCY AND BUSINESS
CONTINUITY PLANNING**

EVENT POSTPONED

THURSDAY 16 FEBRUARY | 12.00–2.00pm | BUSINESS NORTH HARBOUR

Event Postponed

Due to the ongoing flooding situation and the need for Auckland Emergency Management staff to redirect their efforts towards the immediate and urgent response required this workshop has been

postponed.

We hope to reschedule this workshop at a future date, but in the meantime, *Auckland Emergency Management* have provided us with informative resource packs to help you with your own emergency planning. If you would like to receive one of these packs, please email comms@businessnh.org.nz and we will arrange to get one of these sent to you.



Business After 5
BNH's 20th Anniversary Celebration
23rd February 2023, 5.30pm - 7.30pm

You are invited to celebrate the **20th Anniversary** of Business North Harbour!
Join us as we reflect on the past two decades of supporting North Harbour Business and look ahead to an exciting future for our Business Improvement District.

Drinks and nibbles will be provided, and this is also an opportunity for you to network and meet fellow members. We look forward to seeing you there as we continue to build strong connections with our business community. [Register here](#).



Mental Health First Aid Workshop
Friday 17th March 8.30am - 12.45pm

The workshop runs from 08.30am until 12.45 pm with light refreshments provided. This workshop is being held at the Business North Harbour Offices. Learn how to identify, understand and respond to signs of mental health issues in work colleagues, friends and family members.

WHAT TO EXPECT: Using a variety of best practice learning methods, including discussions, videos and scenario work, this course is ideal for anyone wanting to help recognise mental distress and what they can do to help. [Register here](#).



Inorganic Collection
16th -17th March 2023

Business inorganic collections for unwanted office furniture, equipment and e-waste. Pick ups are made from your business (not the roadside) and will be organised with you directly once you have registered for a collection. Please [click here](#) for more information or contact david@businessnh.org.nz.



Showcase North Harbour 2023 - Where conversations start and business happens!
23rd March, 10am - 4pm

- » Build new supplier, partner and client relationships
- » Connect with your clients
- » Create new business opportunities
- » Grow your business networks
- » Build your brand profile
- » Expand your business and knowledge.

Formally known as Business Expo, this is Business North Harbour's signature B2B exhibition and business networking event. Come and be inspired, educated and grow your business networks. Registrations are now open and booth prices start from \$499 + GST. [Register here](#)



Upper Harbour Local Board in partnership with Harbour Sport is pleased to bring FREE Cultural Play to the Upper Harbour communities this summer!

From 10am to 1pm on the dates below:
Albany Community Hub (575 Albany Highway, Albany)
Sat 11th Feb 2023, Sat 25th Feb 2023

Headquarters Building, Hobsonville (214 Buckley Avenue, Hobsonville)
Sun 5th Mar 2023

Each activation will feature Play Experts who will introduce different traditional Asian, Pasifika and Māori games and everyone is invited to give the activities a go! We have also prepared tonnes of play and active recreation equipment for you to enjoy with your friends and family. Our activities and equipment are open to all ages and abilities and we highly encourage families to come down and join us for a few hours exploring the joy of playing. There will be waffles & ice cream, a coffee cart and prizes such as LEGO® and Countdown vouchers so be sure to come on down this summer for some CULTURAL PLAY!

At Harbour Sport, we hope to create social connections, improve sense of belonging of the Upper Harbour whānau and encourage creative thinking through this Cultural Play initiative.

Applications Invited For The BNH Leadership And Business Mentoring Programme



Following the success of the Business North Harbour (BNH) Leadership and Business Mentoring Programmes in 2022, applications are invited from potential mentors and mentees for two new Leadership and Business Mentoring Programmes which will run concurrently in 2023. Developed in conjunction with Dr. Patricia Bossons, Honorary Teaching Fellow, Massey University Business School, one programme will accommodate female mentees who prefer a female mentor, while the other will be a mixture of male and female mentors and mentees. Applications for the programmes should be made by **no later than Wednesday 8th February**, to kevin@businessnh.org.nz click [here](#) for more details.

Latest Information From Business.govt.nz



The following links from business.govt.nz and other Government sources provide the latest information on:

- [Increase your focus and improve your wellbeing](#)
- [Get your rental property up to scratch](#)
- [Protect your retail shop with a fog cannon](#)
- [Understanding Fair Pay Agreements](#)
- [Upskilling options for migrant workers](#)
- [Joining a co-op could benefit your business](#)
- [Have your say on business payment practices](#)

Got questions or need support? Call the free COVID-19 Business helpline on 0800 500 362.

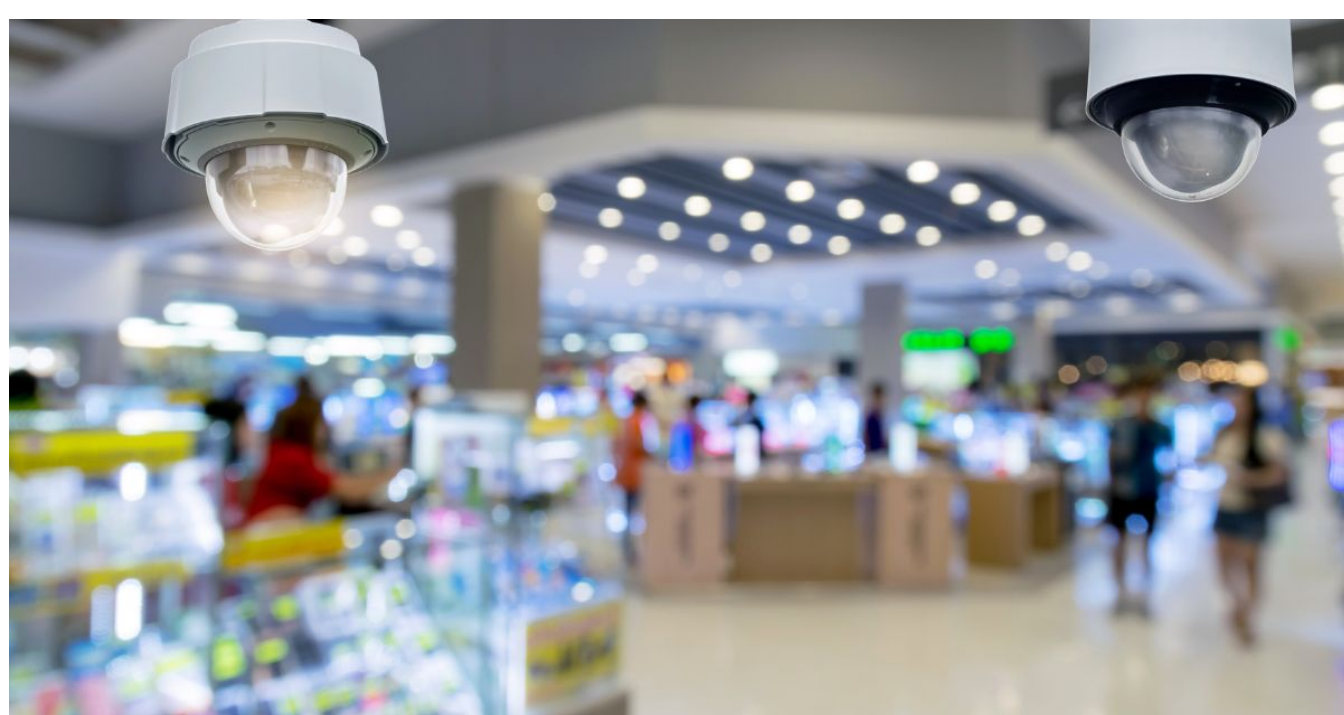
Latest Information From Auckland Unlimited



The following links from [Tātaki Auckland Unlimited](https://www.aucklandcouncil.govt.nz/tataki) provide useful information on:

- [Sustainability and climate action](#)
- [Business strategy and continuity](#)
- [1:1 business support](#)
- [Marketing](#)
- [Māori and Pacific business support](#)
- [Health, wellbeing and safety](#)

Retail NZ Crime Hub



Retail crime is a serious issue for many retailers. The Retail NZ Crime Hub has a range of resources available to help you and your team. Practical advice, guides, webinars, e-learning and supplier recommendations are available to inform and drive your crime mitigation strategy.

[Access Now](#)

Two New Pedestrian Crossings On Paul Matthews Road



In mid-February AT will be installing a traffic light pedestrian crossing at approximately number 45 Paul Matthews Road, and a pedestrian island crossing outside 65 Paul Matthews Road, which will result in moving the bus stop from number 66 to 70. For further details please contact Sarah@businessnh.org.nz

Thank you to our 2022-2023 Gold Sponsors



Thank you to our 2022-2023 Silver Sponsors



Thank you to our Event Sponsors



Click Here
to read more about
our sponsors and
BNH sponsorship
opportunities



CONTACT: 09 968 2222 WEBSITE: www.businessnh.org.nz

EMAIL: admin@businessnh.org.nz OFFICE: Level 1, Unit 2, 322 Rosedale Road, Rosedale

POSTAL: PO Box 303126, North Harbour