

1 April 2025

## We need to do some road maintenance in your neighbourhood

Kia ora,

### Albany Expressway, Albany, Asphalt Resurfacing

Our role is to ensure that people can move around the city easily and safely. We carry out regular maintenance and repair work on the network so they can do this in an easy and efficient manner.

Where	Albany Expressway, Albany
When (start date)	<b>Monday night 07 April 2025</b> <b>Contingency dates up 17 May 2025</b> <b>(no work Friday or Saturday nights)</b>
Hours of work	<b>Nightshift – 7pm to 5am</b>
For (duration)	<b>Approximately 6 nights (weather dependent)</b>

### The work we’re doing

We’re doing this work to maintain and improve your neighbourhood and to keep our communities safe. The drawings overleaf show where we’ll be working.

We’ll do our best to start the work on time. Factors such as wet weather could mean a delayed start. If the delay is significant, we’ll notify you.

We know our work can be a bit loud, and that noise – particularly at night – can be disrupting. We try our best to avoid working at night but sometimes it is necessary to avoid wider disruption on the network or to get the job done faster. If we have to work at night, we’ll do our best to keep noise levels down.

### We’ll handle traffic flow in and out of the area, and any detours

We will use a mix of temporary traffic signs (like stop/go signs) and traffic lights, and a lower speed limit. We do this to keep traffic moving and keep people who use the roads and footpaths safe. Traffic controllers will help to manage vehicle access. Please follow all signs, light signals and traffic directions.



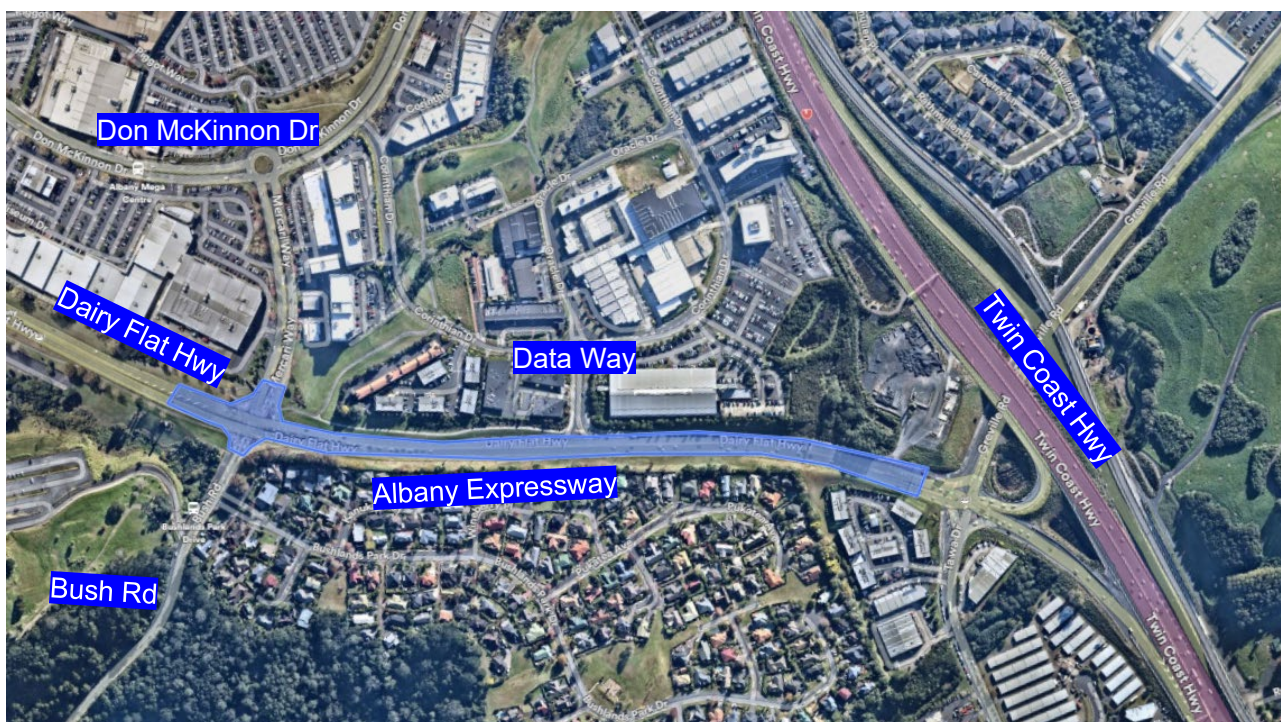


You'll need to reduce your speed when you're driving through the area. Please follow all signs, light signals and traffic directions.

On-street parking will be limited while we carry out the work. You may need to either park on your property or on a side road and walk to your property.

We will need to close a road and set up detours. Please plan ahead and think about using another route. We'll set up signs that give traffic directions for surrounding roads. If you live somewhere along a closed road, traffic controllers at either end of the road will help you. Please follow all signs, light signals and traffic directions.

## Albany Expressway, Albany, Asphalt Resurfacing



### Contact Us

Get in touch with us on 09 355 3553 if you have any questions or concerns about this work.

To learn more about how we maintain roads go to our website: [Road works & disruptions \(at.govt.nz\)](#)

Thank you for your understanding and co-operation whilst we carry out these essential works

Ngā mihi,

Fulton Hogan Engineer: Ewoud Botha

Phone: 027 484 9097

Email: [Ewoud.Botha@fultonhogan.com](mailto:Ewoud.Botha@fultonhogan.com)