

In this edition of YOUR news

- [Business Rates Increase](#)
- [Upcoming Workshops & Events](#)
- [Introducing Carmen Winterbach: Your New Contact At Ember Employment Talent Showcase!](#)
- [Bookable Parking Pilot At Albany Park And Ride](#)
- [Score Big With Albany United FC - Become A Sponsor Today](#)
- [Help Us To End Ongoing Rosedale Pollution – Site Visits Available From 17th March](#)
- [ClimateWise – The New Learning Platform To Support SMEs In Adapting To Climate Change](#)
- [Predicted Employment Requirements Survey Update](#)
- [Latest Information From Business.govt.nz](#)

Business Rates Increase

Kia ora tatou,

In the previous newsletter I encouraged as many members as possible to have their say on Auckland Council's Annual Plan 2025 – 2026 (Annual Budget) which is open for submissions until Friday 28th March. This year's proposed Annual Budget is very bland compared to many previous iterations as there aren't many contentious issues to address however, there is one issue that will affect all members.

As part of the Long-Term Plan Budget last year Council decided, despite strong objections from BNH and other Business Improvement Districts, to set the Business Rates Differential (which is the percentage of the total rates collected by Council from business properties) at 31%, having previously agreed to reduce this total to around 25% over the next few years. To enable Council to collect 31% of the total rates income from business properties in the next financial year, they are proposing to increase business rates by 6.8% on an average-value business property.

BNH believes that this is unfair on business property owners so we will be registering our objection to this and I would again encourage members to do the same. More information is available on pages 30 - 31 of the Consultation Document which is available [here](#)

Please go to the Council website <https://akhaveyoursay.aucklandcouncil.govt.nz/annual-plan-2025-2026> to ensure that you take this opportunity to voice your opinion.

Ngā mihi mahana,

Kevin O'Leary

General Manager, Business North Harbour

Upcoming Workshops & Events



The poster for 'The Hatters Pink Tea Party' features a woman in a striped hat and dress holding a teacup. The background has vertical pink and orange stripes. Logos for Business North Harbour and PHONEplus are in the top left. Text on the right says 'A FABULOUS FUNDRAISER IN SUPPORT OF THE BREAST CANCER FOUNDATION'. The title 'The Hatters PINK TEA PARTY' is in large white letters. Event details at the bottom include: 'FRIDAY, 14 MARCH 2025 10:00 AM – 12:30 PM', 'NORTH HARBOUR STADIUM', 'DRESS CODE: THINK PINK, FABULOUS HATS, AND LOTS OF FLAIR!', and '\$35+GST PER PERSON | TABLE OF 10 FOR \$315+GST'. A 'PROUD COMMUNITY SUPPORTER' logo for Breast Cancer Foundation NZ is in the bottom right.

The Hatters Pink Tea Party: A Breast Cancer Foundation Fundraiser

Friday 14th March 2025, 10.00am

North Harbour Stadium

Welcome to The Hatters Pink Tea Party auction!

All proceeds from auction items will go directly to the **Breast Cancer Foundation (BCF)**, supporting their critical work in raising awareness, funding research, and providing support services for those impacted by breast cancer.

By bidding on these incredible auction items, you're helping to:

- Fund groundbreaking research projects led by some of New Zealand's top scientists.
- Educate Kiwis about breast health, the importance of regular screening, and recognising the signs and symptoms of breast cancer.
- Provide free support services to breast cancer patients and their families.

[View All Items](#)



The poster for 'Inorganic Collection' shows various office and household items like a green sofa, a blue desk, a yellow table, and a red chair. A speech bubble says 'Help reduce landfill, protect the environment and save money!'. Text on the right says 'Only \$49 plus GST per m³ collected' and '*Minimum charge of \$49 plus GST applies'. The Abilities Group logo is in the top right. The Business North Harbour logo is in the bottom right. The URL 'BUSINESSNH.ORG.NZ/INORGANICCOLLECTION' is at the bottom. On the left, vertical text reads '20TH & 21ST MARCH 2025 INORGANIC COLLECTION REUSABLES // E-WASTE // GENERAL INORGANIC'.

Last Chance To Book A Registration!

Inorganic Collection

Our next Office Inorganic Collection will take place on 20th – 21st March 2025. We have negotiated a special minimum discounted rate of \$49.00 plus GST per cubic metre collected (i.e. equivalent to a small garden trailer load) for our members. Pick-ups are made from your business premises (not the road side). For more information, [click here](#)



The poster for 'Ingham North Harbour Summer Fleet Day' features a blue SUV driving on a dirt road in a desert landscape. The Ingham logo is in the top left. Text says 'NORTH HARBOUR Summer Fleet Day'. Below that, it says 'Join us RSVP below'. At the bottom, logos for Hyundai North Harbour, Isuzu North Harbour, and North Harbour Renault are shown.

Fleet Days Event: Ingham North Harbour - Hyundai, Isuzu and Renault

Thursday 3rd April, 12 noon - 6pm

175 Wairau Road, Wairau, North Shore

Light refreshments and BBQ provided

You are invited to our Ingham Summer Fleet Days Event. Network with our industry leading commercial fleet specialists under the sun, all while enjoying a few cheeky refreshments, hot BBQ

food, and chilled DJ-spun summer beats. Specialist fit-out experts *AutoTransform* and signwriting wizards *Sign M8* will be on-hand to showcase their products. Bring a friend, bring your sunnies, and get ready for an informal and fun afternoon.

RSVP below or call Matt Barker, Fleet Sales Specialist on 027 838 2981.

RSVP



Hato Hone St John

MENTAL HEALTH FIRST AID WORKSHOP

THURSDAY 20 MARCH 2024, 8.30AM - 12.45PM
BUSINESS NORTH HARBOUR, 322 ROSEDALE ROAD

Mental Health First Aid Training - with Hato Hone | St John
Thursday 20th March, 8.30am - 12.45pm
Business North Harbour

Learn how to identify, understand and respond to signs of mental health issues in work colleagues, friends and family members.

WHAT TO EXPECT

Using a variety of best practice learning methods, including discussions, videos and scenario work, this course is ideal for anyone wanting to help recognise mental distress and what they can do to help.

WHO SHOULD ATTEND

- Those who are responsible for staff or interact with the public
- Anyone who wants to improve their knowledge around mental health and wellbeing

COURSE OUTCOMES

By the end of the course participants should be able to:

- Identify the early signs of mental distress
- Have an understanding of the relationship between mental health and unwellness
- Identify when a person may be experiencing a mental health crisis
- Identify strategies for managing a mental health crisis safely
- Know and be able to use the St John Listen to your HEAD™ action plan
- Identify agencies who can help and/or know how to get immediate assistance if necessary
- Understand debrief strategies for self-care including reflective practice

Register Here

BUSINESS NORTH HARBOUR | LEARNING LAB



WORK SMART, STAY HEALTHY UNLOCKING WELLNESS WITH PROFESSOR AJMOL ALI

WEDNESDAY 26 MARCH 2025
12:00-2:00PM BUSINESS NORTH HARBOUR

imago WELLNESS COACHING

Business North Harbour

Learning Lab 3: Work Smart, Stay Healthy: Unlocking Wellness with Professor Ajmol Ali
Wednesday from 26th March, 12.00pm - 2.00pm
Business North Harbour: 322 Rosedale Rd, Rosedale, Albany

Join us for an enlightening workshop on the secret to working smart and staying healthy, featuring Professor Ajmol Ali, a renowned expert in Exercise Science at Massey University. Professor Ali will take you on a journey into how you can help yourself manage the demands of a hectic professional life, sharing valuable insights from his extensive research and personal experience. Discover practical wellness tips to integrate into your routine – some may not stick, but the exploration will be enjoyable!

ABOUT OUR EXPERT:

Ajmol is currently Professor of Exercise Science at Massey University. His research spans several themes including paediatric exercise science, supplementation for health, wellness and performance, sport performance, and wellness at work. Ajmol is also Director of **Imago Wellness Coaching**, collaborating with national and international organisations to provide online, customised wellness coaching to help employees become more productive and lead healthier lives. Away from work Ajmol still continues to play football (albeit at a much slower pace than in his younger years!) and also enjoys coaching his two young children.

A light lunch will be served, please get in touch if you have any dietary requirements.

Register Here

北港
华商

5th 周年庆

Business North Harbour

RSM
Assurance/ Tax/ Consulting

Business North Harbour and RSM NZ (Auckland North)
present the Asian Business Group
ANNIVERSARY LUNCH

四月 星期 03 四 | 12 - 2 pm | 得月樓 6/8 Oracle Drive, Albany

Auckland Emergency Management Auckland Council JAS WOOD JAS WOOD (NZ) LIMITED IGNITE GROWTH CONSULTING

2025

Asian Business Collective: Work Smart, Stay Healthy: Unlocking Wellness with Professor Ajmol Ali
Thursday, 3rd April, 12.00pm - 2.00pm
Luna House, 6/8 Oracle Drive, Albany

We sincerely invite you to attend the **5th Anniversary Lunch of the Asian Business Group** hosted by Business North Harbour. This is a great opportunity to connect with North Shore business peers, meet industry experts, and gain valuable insights from our esteemed guests.

Guests & Activities:

- **Professional financial planning insights** from Addie Wang and Grace Wee of RSM International, a renowned accounting firm.
- **Natural disaster risk management guidance** from Auckland Emergency Management.
- Enjoy a **delicious lunch and refreshments**.
- Participate in a **lucky draw** for a chance to win exciting prizes.

We hope you won't miss this rare opportunity to network and celebrate! **Seats are limited**, click [Register](#) to sign up.

Register Here



CNSST FOUNDATION

Enrol Now & Secure Your Spot!

Email: clc@cnsst.org.nz

Call: 021769686 Selina

Let's explore the beauty of the Chinese language together!



Albany Adult Chinese Classes

Every Tuesday from 18th March, 5.30am - 7.00pm

CNSST Foundation, 231 Dairy Flat Highway, Albany

Total Classes: 33 for the year 2025 (excluding school holidays)

Join Albany Adult Chinese Classes!

Are you ready to immerse yourself in the rich world of the Chinese language and culture? We are excited to announce the start of our Albany Adult Chinese Classes on 18th March 2025! Learn one of the world’s most spoken languages in a fun and interactive way. Engage with a supportive community of learners.

Email: clc@cnsst.org.nz Call: 021769686 (Selina)
Don’t miss this opportunity to expand your horizons and connect with a global language.



Step Up To Leadership

Step up to be the leader you are meant to be.

Learn How To:

- Transition from doing to leading
- Lead by example
- Listen with empathy
- Earn trust and build cooperation
- Create a sense of direction for your team
- Foster collaboration
- Delegate and hold people accountable
- Hold a performance appraisal and provide recognition that builds confidence and loyalty in others
- Resolve conflicts and convert negativity into positive production
- Give difficult feedback without creating resentment
- Be cool under pressure

When: Tuesday 15th April 2024 8:30am - 4:30pm
Location: BNZ North Shore Partners Centre, Level 3, 55 Corinthian Drive, Albany
Investment: \$800 + GST
Email to register: michele@dalecarnegie.co.nz

This workshop is registered with the Regional Business Partner Network. To explore if your business may be eligible for support, contact us, so we can put you in touch with your local Regional Business Growth Advisor if appropriate to discuss further.



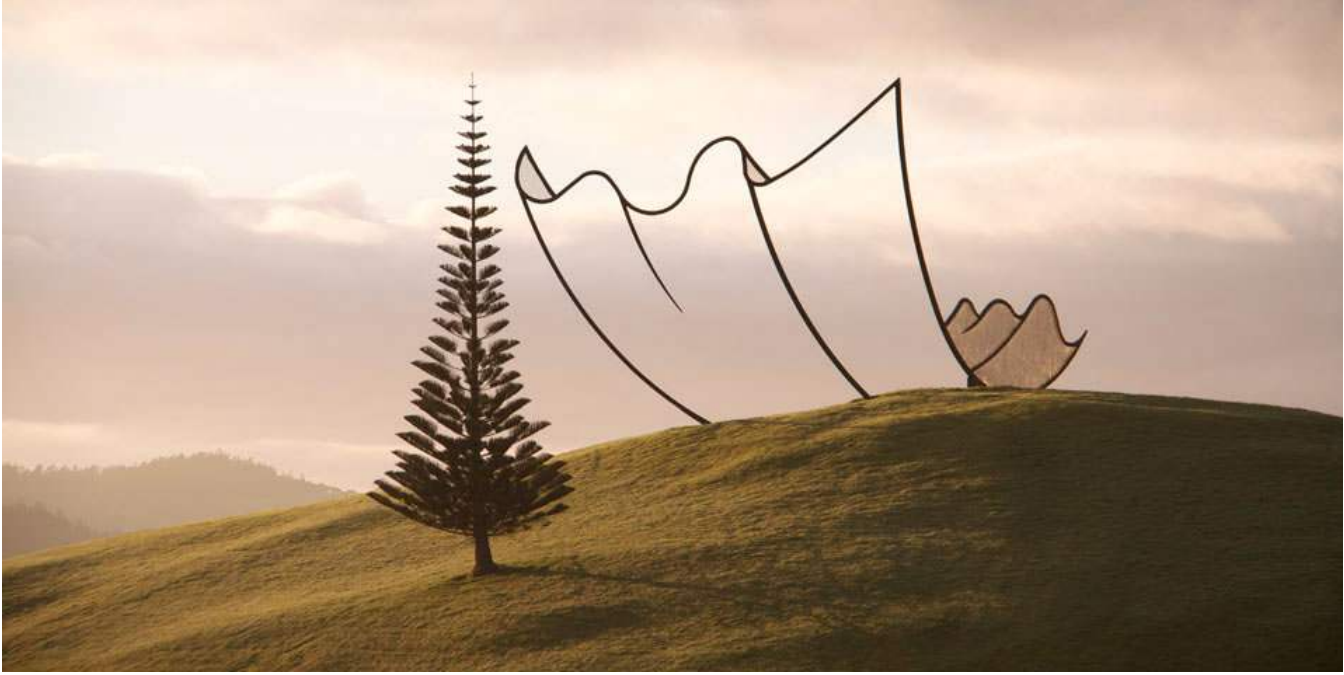
View Course Programme

Contact: michele@dalecarnegie.co.nz | 0275 988 430 | www.dalecarnegie.co.nz

Member Event: Step Up To Leadership brought to you by Dale Carnegie
Tuesday 15th April, 8.30am - 4.30pm
BNZ North Shore Partners Centre

Step up to be the leader you are meant to be
Don’t supervise.... *super-lead* your team to breakthrough performance!
In this programme, you will smooth your transition from individual contributor to leader.

[Register Here](#)



Gibbs Farm, Graeme Dingle Foundation Fundraiser 2025
Thursday 10th April, 10.00am - 2.00pm
2421 Kaipara Coast Highway, Makarau, Auckland
Tickets: Starting from \$65 per person

Join us for an unforgettable experience at the exclusive **Gibbs Farm Sculpture Park** in North Auckland on **Thursday, April 10th!** This one-off event gives you rare access to one of the world's most renowned outdoor sculpture collections.
Nestled along the stunning Kaipara Harbour, the sculptures at Gibbs Farm seamlessly blend with the natural beauty of the region, creating a breathtaking landscape that you can explore. Home to the largest outdoor sculpture collection in the Southern Hemisphere, Gibbs Farm is privately owned and not open to the public, making this event an absolute must-see!

[Get Tickets](#)

Introducing Carmen Winterbach: Your New Contact At Ember Employment Talent Showcase!

Ember Employment Talent Showcase



We've got the talent for the job you've got.

Introducing Carmen



Contact: carmen.winterbach@ember.org.nz
today to learn more.

We are excited to announce that Carmen Winterbach is now leading the Ember Employment Talent Showcase. Having worked closely with her predecessor, Janey Housego, Carmen is well-prepared to step into this role seamlessly.

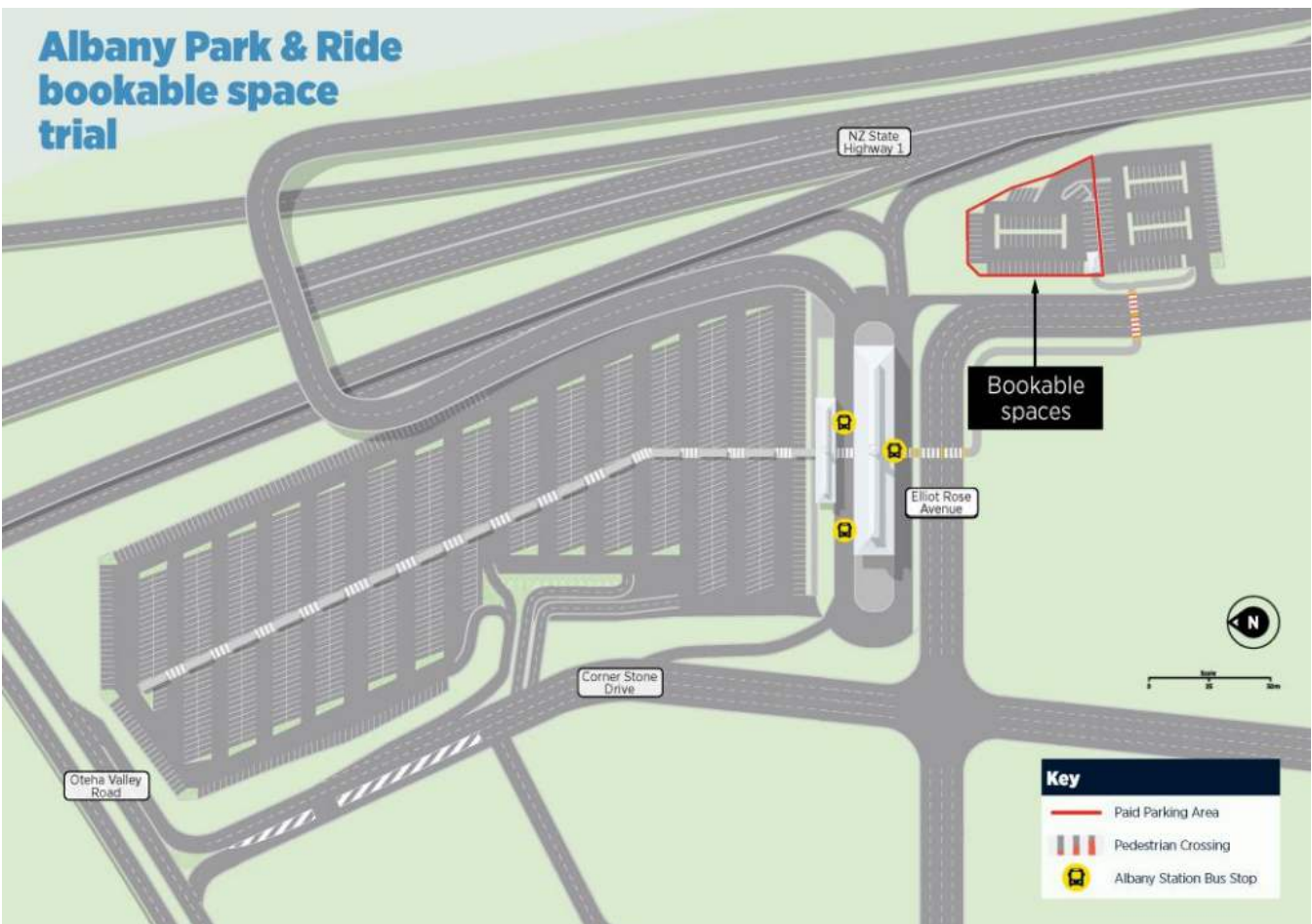
If you're seeking candidates to fill your vacancies, Carmen is your go-to person. Ember Employment boasts a diverse pool of jobseekers, ranging from seasoned professionals to those just starting their careers.

To learn more about our jobseekers, reach out to Carmen at carmen.winterbach@ember.org.nz.

Ember Employment is dedicated to connecting employers with the right talent, whether you need administrators, technicians, or site supervisors. As one of Aotearoa’s largest NGOs, we are committed to creating opportunities for everyone, envisioning an Aotearoa where all people are supported to be who and what they want to be."

This FREE resource is supported by Business North Harbour. Don't miss out—contact Carmen today!

Bookable Parking Pilot At Albany Park and Ride



The bookable parking pilot at Albany Park and Ride started on Monday 3rd March. The map below shows the dedicated area for bookable spaces, south of the main park and ride.

AT is trialing bookable spaces, ensuring a spot is available at any time of day. The cost is set lower than nearby street parking, making it a practical option. This trial will evolve based on how it’s used and customer feedback. The goal is to improve access to Albany Station and support easier travel. Auckland transport welcome your input as the trial progresses.

Score Big With Albany United FC - Become A Sponsor Today!



ALBANY
UNITED

Boost Your Brand • Support Local Football • Connect with Your Community

Albany United Football Club is calling on local businesses to be part of something special! As one of North Harbour's premier football clubs, we provide opportunities for hundreds of players, from aspiring juniors to competitive senior teams. Now, we're offering you the chance to get involved and grow your brand while supporting grassroots sport.

Why Partner with Albany United?

- ✓ Unmatched Brand Visibility – Your logo featured on jerseys, signage, and digital platforms seen by thousands.
- ✓ Community Engagement – Be part of a passionate local fanbase and connect with families, players, and supporters.
- ✓ Networking & Business Growth – Expand your reach through our club events and collaborations.
- ✓ Positive Brand Alignment – Show your commitment to health, teamwork, and youth development.

Flexible Sponsorship Packages Available!

From major sponsorships to matchday partnerships, we have opportunities tailored to suit businesses of all sizes. Whether you're looking for high-impact brand exposure or a way to give back, we'd love to find the perfect fit for you.

Let's Kick Off a Winning Partnership!

✉ Contact us today to learn more: Garry Trewin 0212531808 president@albanyunited.org

🌐 Visit our website: <https://www.albanyunited.org/>

Join us and be part of Albany United's journey – together, we can make the 2025 season unforgettable!

Help Us To End Ongoing Rosedale Pollution – Site Visits Available From 17th March

Over recent months Council has been made aware of a number pollution events in the Rosedale Industrial area. As most stormwater doesn't get treated, any contaminants that enter the stormwater drains can end up in our waterways. This doesn't mean that industrial sites are necessarily putting things into the stormwater on purpose but there may be poor practices which are unintentionally contributing to the contamination of the waterways. Stormwater management is important on industrial sites due to the potential type, range and quantity of contaminants which could reach vulnerable environments. These contaminants can reduce the amount of available oxygen, change the nutrient levels, affect the temperature or pH or physically smother wildlife like Pukeko and eels.

Due to this, we would like to visit businesses within the catchment, that can be identified as undertaking an Industrial or Trade Activity. The purpose of these visits will be to check that the practices on site are in line with best practice and to check whether the requirements of the Auckland Unitary Plan (Operative in Part) (AUP(OP)) are being met. You may have been visited by the Industrial Pollution Prevention Programme (IPPP) in the past, which is a local board funded initiative to educate businesses on best practice.

If you would like to arrange a time for us to visit, please contact us directly at itapp@aucklandcouncil.govt.nz. Site visits generally take around 15 minutes and we will go through some of your site processes, have a look around the site and go over any paperwork. For more information, see [Industrial and Trade Activity \(ITA\) business and stormwater \(aucklandcouncil.govt.nz\)](#).

ClimateWise – The New Learning Platform To Support SMEs In Adapting To Climate Change



Climate Connect Aotearoa has launched a new learning platform designed to support small and medium-sized businesses in adapting to climate change. You can now explore ClimateWise here: <https://learn.climateconnectnz.com/> to learn how to assess the risks to your business, the benefits of adapting to change and how to develop an adaptation plan.

Predicted Employment Requirements Survey Update

Thank you to all those members who took part in the recent survey to outline their predicted employment requirements over the next 6 – 9 months. The survey was undertaken as a result of discussions with the Ministry Of Social Development (MSD) who had access to government-funded assistance to fill certain roles within businesses which could support the recruitment process. MSD has informed BNH that unfortunately this initiative has been put on hold until later in the year. BNH is obviously very disappointed in this outcome and we will provide any further information if and when it is made available.

Latest Information From Business.govt.nz



The [business.govt.nz](#) and other Government sources provide the latest information for businesses.

If you have any questions or need support please contact the Ministry of Business, Innovation and Employment (MBIE)'s phone line for small businesses: Freephone **0800 424 946**

Thank you to our 2024-2025 PLATINUM PARTNERS

Ingham[®]

ember
KOROWAI TAKITINI

Thank you to our 2024-2025 GOLD PARTNERS

BENEFITZ
→ Design → Build → Fit → Upgrade
→ Future thinkers.

driveline
leasing and finance

parkland

RAMADA
SUITES BY WYNDHAM
ALBANY

Spark
Business Hub
Auckland
North

Thank you to our 2024-2025 SILVER PARTNERS

ASSA ABLOY

EDIBLE BLOOMS
YOUR NEW WORLD OF GIFTS

OXYGEN
OUTSOURCING

RAPT!
USE YOUR SKILLSET

Rothbury
RESOURCES

VANGUARD SECURITY

Thank you to our Event PARTNERS

Women in Business

Business North Harbour Business Excellence Awards

PHONE plus
BUSINESS SERVICES

purple ink



CONTACT: 09 968 2222 WEBSITE: www.businessnh.org.nz

EMAIL: admin@businessnh.org.nz OFFICE: Level 1, Unit 2, 322 Rosedale Road, Rosedale

POSTAL: PO Box 303126, North Harbour