

## In this edition of YOUR news

- [Out Of Recession](#)
- [Upcoming Workshops & Events](#)
- [Past Events](#)
- [Latest Information From Business.govt.nz](#)
- [Introducing Carmen Winterbach: Your New Contact At Ember Employment Talent Showcase!](#)
- [Auckland Transport's Parking Plan For Albany.](#)
- [Time Is Nearly Up To Have Your Say On Auckland Council's Annual Plan 2025/2026](#)
- [Security Update - Road Facing CCTV](#)

## Out Of Recession

Kia ora tatou,

I, along with most if not all of our members, was pleasantly surprised by the figures issued by Stats NZ on the 20th March, which indicated a 0.7% increase in Gross Domestic Product (GDP) in the December 2024 quarter. This means that NZ is officially out of recession and although our economic recovery is rather laboured, at least it appears that we're heading in the right direction.

With a further cut in the Official Cash Rate (OCR) and hopefully interest rates predicted in April, there are some positive signs for the future. However, there are also some negatives, as unemployment continues to rise and power bills, business rates, household rates and water rates are all set to increase by around 10%, 6.8%, 5.8% and 7.2% respectively.

Based upon this information it would appear that we're in for more ups and downs during the coming months but I hope that you experience more ups than downs and the positives outweigh the negatives to help ease the financial pressures that some members are still facing.

### Breast Cancer Fundraiser An Outstanding Success

On a much happier note, I'd like to thank everyone who helped to make our fundraising event in partnership with the Breast Cancer Foundation a huge success. Together with our event partner Phone Plus Group, the businesses that donated auction items and/or raffle prizes and the over 350 attendees, we raised a huge sum of money towards this worthwhile cause. I'm not going to be the spoiler, full details of the event and some great pictures are available in the newsletter!

Ngā mihi mahana,

**Kevin O'Leary**

General Manager, Business North Harbour

## Upcoming Workshops & Events



Fleet Days Event: Ingham North Harbour - Hyundai, Isuzu and Renault  
Thursday 3rd April, 12 noon - 6pm  
175 Wairau Road, Wairau, North Shore  
Light refreshments and BBQ provided

You are invited to our Ingham Summer Fleet Days Event. Network with our industry leading commercial fleet specialists under the sun, all while enjoying a few cheeky refreshments, hot BBQ food, and chilled DJ-spun summer beats. Specialist fit-out experts *AutoTransform* and signwriting wizards *Sign M8* will be on-hand to showcase their products. Bring a friend, bring your sunnies, and get ready for an informal and fun afternoon.

RSVP below or call Matt Barker, Fleet Sales Specialist on 027 838 2981.

RSVP



Massey Business School's Sustainable Futures Hub presents:  
Ethical leadership could truly drive a sustainable future – but  
are the challenges too high?

Thursday 10 April 2025 | 5:30pm – 7:00pm  
Massey University, Albany Campus, Level 1, Innovation Complex

Massey Business School's Sustainable Futures Hub presents  
Thursday 10th April, 5.30pm - 7.00pm  
Massey University, Albany Campus, Level 1, Innovation Complex

The **MBS Sustainable Futures Hub** is back this year to discuss key issues related to sustainability. With the United Nations 2030 Sustainable Development Goals only five years away and the global economic and political environment looking unstable, how will businesses forge a way towards a sustainable future where people, planet and prosperity are a given?

In our first seminar, we will be encouraging thought around Ethical Leadership – What is it? How could it drive a sustainable future? What are the real challenges?

We believe universities and businesses together can make a real difference in creating ethical leaders. Come and be part of the conversation. We are fortunate to have Penny Holden, a passionate and experienced culture and leadership consultant, as a guest speaker, with Dr Sarah Dodds from MBS Sustainability Hub facilitating.

Join us for an exciting evening of networking and discussions on sustainability and ethical leadership. Learn about the latest trends from industry experts and thought leaders. Don't miss this opportunity to connect with like-minded individuals and gain valuable insights into creating a more sustainable future. See you there!

Register Here

北港  
华商

5<sup>th</sup>  
周年庆

Business  
North  
Harbour

RSM  
Assurance/Tax/Consulting

Business North Harbour and RSM NZ (Auckland North)  
present the Asian Business Group

ANNIVERSARY LUNCH



四月 星期  
03 四



12 – 2  
pm pm



得月樓  
6/8 Orade Drive, Albany



JAS WOOD (NZ) LIMITED  
嘉森木业新西兰有限公司





Asian Business Collective  
Thursday, 3rd April, 12.00pm - 2.00pm  
Luna House, 6/8 Oracle Drive, Albany

We sincerely invite you to attend the 5th Anniversary Lunch of the Asian Business Group hosted by Business North Harbour. This is a great opportunity to connect with North Shore business peers, meet industry experts, and gain valuable insights from our esteemed guests.

Guests & Activities:

- Professional financial planning insights from Addie Wang and Grace Wee of RSM International, a renowned accounting firm.
- Natural disaster risk management guidance from Auckland Emergency Management.
- Enjoy a delicious lunch and refreshments.
- Participate in a lucky draw for a chance to win exciting prizes.

**Waitlist**

Event Waitlist Ticket

Thank you for your interest in Asian Business Group 5th Anniversary Lunch!

**Unfortunately, all tickets are currently sold out. However, by joining our waitlist, you'll be the first to know if any tickets become available.**

Waitlist



DHL Super Rugby Pacific 2025 - Moana Pasifika V Waratahs  
Saturday 05th April, 2.05-4.00pm  
North Harbour Stadium

Moana Pasifika return home to take on the Waratahs in an afternoon spectacle perfect for the whole aiga. Join us for some thrilling rugby, a taste of Pasifika culture and great entertainment.

Buy Tickets



## Step Up To Leadership

**Step up to be the leader you are meant to be.**

**Learn How To:**

- Transition from doing to leading
- Lead by example
- Listen with empathy
- Earn trust and build cooperation
- Create a sense of direction for your team
- Foster collaboration
- Delegate and hold people accountable
- Hold a performance appraisal and provide recognition that builds confidence and loyalty in others
- Resolve conflicts and convert negativity into positive production
- Give difficult feedback without creating resentment
- Be cool under pressure

**When: Tuesday 15th April 2024 8:30am - 4:30pm**  
**Location: BNZ North Shore Partners Centre, Level 3, 55 Corinthian Drive, Albany**  
**Investment: \$800 + GST**  
**Email to register: [michele@dalecarnegie.co.nz](mailto:michele@dalecarnegie.co.nz)**

This workshop is registered with the Regional Business Partner Network. To explore if your business may be eligible for support, contact us, so we can put you in touch with your local Regional Business Growth Advisor if appropriate to discuss further.



**View Course Programme**

**Contact: [michele@dalecarnegie.co.nz](mailto:michele@dalecarnegie.co.nz) | 0275 988 430 | [www.dalecarnegie.co.nz](http://www.dalecarnegie.co.nz)**

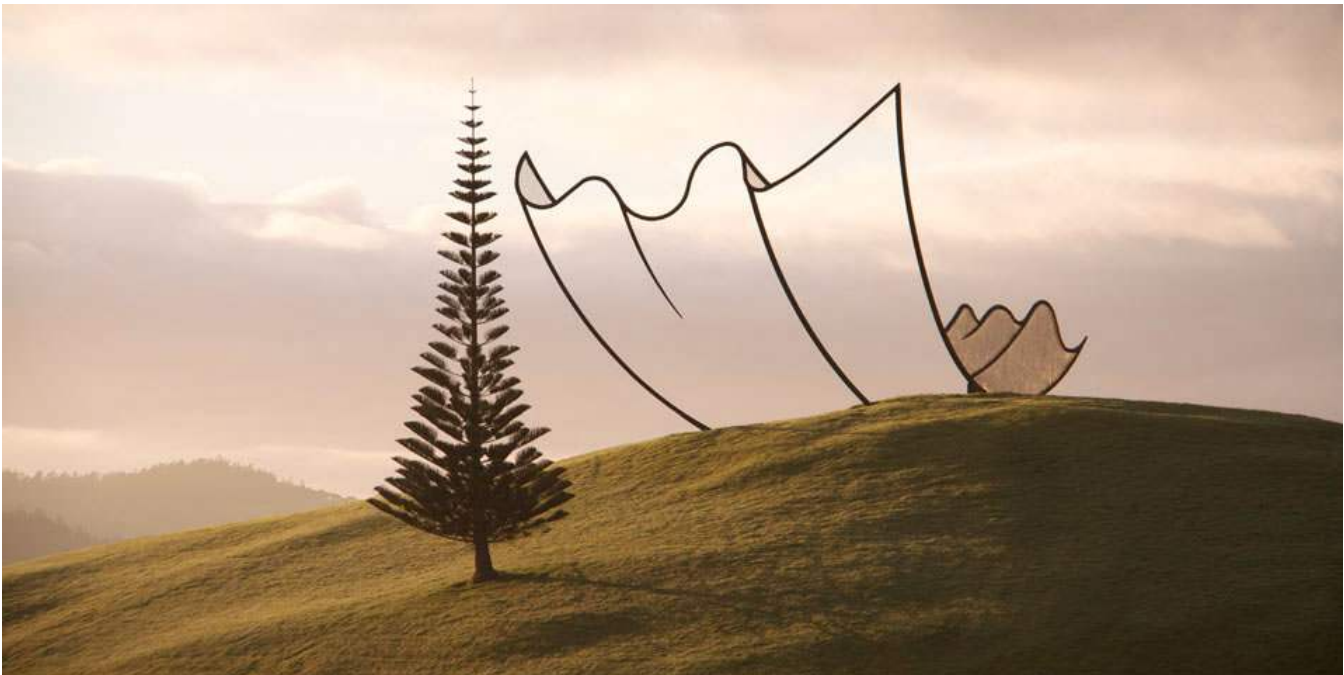
Member Event: Step Up To Leadership brought to you by Dale Carnegie  
Tuesday 15th April, 8.30am - 4.30pm  
BNZ North Shore Partners Centre

Step up to be the leader you are meant to be

Don't supervise.... *super-lead* your team to breakthrough performance!

In this programme, you will smooth your transition from individual contributor to leader.

Register Here



Gibbs Farm, Graeme Dingle Foundation Fundraiser 2025  
Thursday 10th April, 10.00am - 2.00pm  
2421 Kaipara Coast Highway, Makarau, Auckland  
Tickets: Starting from \$65 per person

Join us for an unforgettable experience at the exclusive **Gibbs Farm Sculpture Park** in North Auckland on **Thursday, April 10th!** This one-off event gives you rare access to one of the world's most renowned outdoor sculpture collections.

Nestled along the stunning Kaipara Harbour, the sculptures at Gibbs Farm seamlessly blend with the natural beauty of the region, creating a breathtaking landscape that you can explore. Home to the largest outdoor sculpture collection in the Southern Hemisphere, Gibbs Farm is privately owned and not open to the public, making this event an absolute must-see!

Get Tickets

**Past Events**



North Harbour Stadium was a sea of pink as over 350 guests came together for a special fundraising event hosted by Business North Harbour (BNH) in partnership with Breast Cancer Foundation NZ (BCFNZ). The atmosphere was filled with excitement, generosity, and a shared commitment to supporting those affected by breast cancer. Thanks to the incredible generosity of our attendees, sponsors, and donors, the event raised an outstanding \$18,622.85 —a testament to the power of community coming together for an important cause. These funds will go directly to Breast Cancer Foundation NZ, supporting their crucial work in education, research, and patient support services. To view event video and photos, [click here](#)





The [business.govt.nz](https://business.govt.nz) and other Government sources provide the latest information for businesses.

- [Minimum wage rate are going up](#)
- ['Have a hmmm' on site](#)
- [Need a hand levelling up your business knowledge?](#)
- [How communicating with your tenants has changed](#)
- [Get ready for healthy homes deadline](#)
- [Get your business set up for eInvoicing](#)
- [Do you employ migrants?](#)
- [Get your gift cards ready for 2026 changes](#)
- [Order the right amount at the right time](#)
- [Tax changes that may affect your business](#)

If you have any questions or need support please contact the Ministry of Business, Innovation and Employment (MBIE)'s phone line for small businesses: Freephone **0800 424 946**

---

## Introducing Carmen Winterbach: Your New Contact At Ember Employment Talent Showcase!



We are excited to announce that Carmen Winterbach is now leading the Ember Employment Talent Showcase. Having worked closely with her predecessor, Janey Housego, Carmen is well-prepared to step into this role seamlessly.

If you're seeking candidates to fill your vacancies, Carmen is your go-to person. Ember Employment boasts a diverse pool of jobseekers, ranging from seasoned professionals to those just starting their careers.

To learn more about our jobseekers, reach out to Carmen at [carmen.winterbach@ember.org.nz](mailto:carmen.winterbach@ember.org.nz).

Ember Employment is dedicated to connecting employers with the right talent, whether you need administrators, technicians, or site supervisors. As one of Aotearoa's largest NGOs, we are committed to creating opportunities for everyone, envisioning an Aotearoa where all people are supported to be who and what they want to be."

This FREE resource is supported by Business North Harbour. Don't miss out—contact Carmen today!

---

## Auckland Transport's Parking Plan For Albany



Auckland Transport is developing a parking plan for Albany as part of [Room to Move: Tāmaki Makaurau Auckland's Parking Strategy](#). Albany is one of around 70 centres across Auckland which will have parking plans developed and delivered over the next decade. We want to hear from you. Read more [here](#)

---

## Time Is Nearly Up To Have Your Say On Auckland Council's Annual Plan 2025/2026



Our consultation on the council's [Annual Plan for 2025/2026](#) is closing soon – so you're encouraged to get your feedback in now.

Auckland Council's proposed [Annual Plan 2025/2026 consultation](#) runs until **Friday 28 March 2025**.

This year's plan focuses on getting on with strengthening the financial and physical resilience of Auckland, as committed to in the [Long-Term Plan](#), while investing where it is needed most to manage growth.

There's no significant changes to service or investment levels proposed, compared with what is in the Long-term Plan, but it is important to check in each year with our communities to make sure we are still on the right track.

This year's annual plan consultation:

In 2025/2026 we're:

- prioritising investment in transport, water and fair funding for local communities
- seeking feedback on funding major events and destination marketing, local board priorities, proposed changes to targeted rates, fees and charges and Te Maunga Authority
- proposing an overall rates rise of 5.8 per cent for the average value residential property in 2025/2026, as set-out in the Long-term Plan.

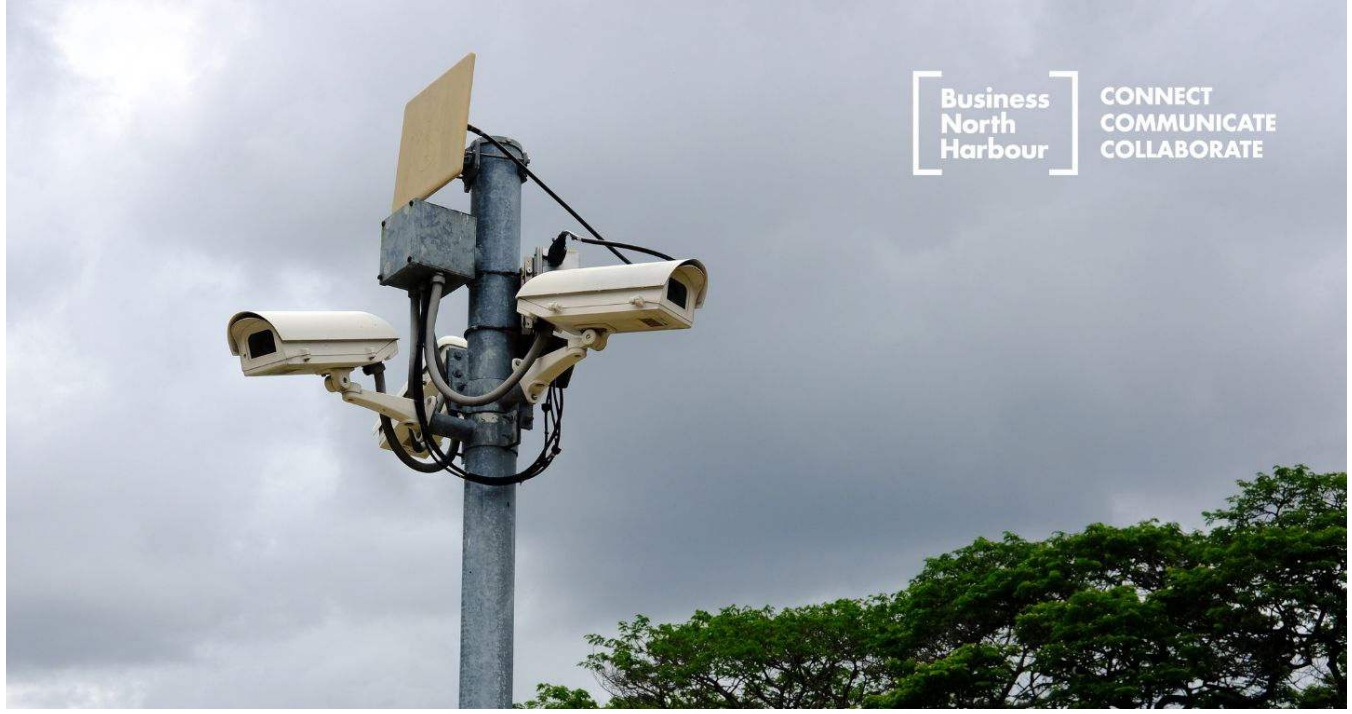
Don't miss your chance to [have your say](#), on the council's key investments for 2025/2026.

**[Find out more about this year's Annual Plan consultation, on the AK Have Your Say website](#)**

---

## Security Update - Road Facing CCTV





Business North Harbour's road facing cameras in conjunction with business members' CCTV have recently identified offenders within our area.

#### Boy Racers

Approximately 20 cars arrived on William Pickering Drive at 1150hrs on a Saturday night recently. They were identified on CCTV footage by our security contractor Vanguard Security Ltd and were then verified by a Vanguard security patrolman. Police were alerted to the congregation and arrived on site at 0025hrs to disperse them from our area before they could set-up to do burnouts or race.

#### Stolen Caravan

Recently Business North Harbour cameras identified a 4 wheel drive vehicle entering our area on a Sunday evening and leaving 40 minutes later towing a caravan stolen from one of our members. The footage was able to assist police in due course to identify the offender(s).

The use of footage from road facing cameras is invaluable BUT only comes into play when we are provided with a narrow window of time within which an offence has occurred. The time of any offence would normally be obtained from a monitored premise security alarm or on-site business premise CCTV. Either of these security measures is vital for all businesses to have available to manage any risk to their assets.

Please contact our crime prevention specialist [Dave Loader](#) if you would like more information on how to protect your assets or if you would like a free security audit.

Thank you to our 2024-2025 PLATINUM PARTNERS



Thank you to our 2024-2025 GOLD PARTNERS



Thank you to our 2024-2025 SILVER PARTNERS



Thank you to our Event PARTNERS



Women in Business

Business North Harbour Business Excellence Awards



CONTACT: 09 968 2222 WEBSITE: [www.businessnh.org.nz](http://www.businessnh.org.nz)

EMAIL: [admin@businessnh.org.nz](mailto:admin@businessnh.org.nz) OFFICE: Level 1, Unit 2, 322 Rosedale Road, Rosedale

POSTAL: PO Box 303126, North Harbour