

In this edition of YOUR news

- [End Of Year Opportunity](#)
- [Upcoming Workshops & Events](#)
- [Past Events](#)
- [Buy North Harbour](#)
- [Housing Intensification \(PC 120\) May Affect Your Business](#)
- [Rosedale Bus Station Update](#)
- [Latest Information From Business.govt.nz](#)
- [Every Moment Matters](#)
- [Te Hōnonga A Iwi Christmas Gift Guide](#)
- [A Decade Of Grins](#)
- [Wallace Cotton - 20 Years Of Comfort And Style](#)

End Of Year Opportunity

Kia ora tatou,

Given the economic challenges that many members have endured for what appears to be an eternity, the BNH annual ONE DAY SALE (ODS) now in its thirteenth year, is an ideal opportunity for our retailers, wholesalers and distributors to improve their cashflow and move some stock before the Christmas holidays.

This year's event will take place on Saturday 6th December, with thousands of shoppers expected in the area on the day, all looking for a bargain for themselves, their family or their friends.

You can register to open your business on-site or there's also a pop-up venue if your premises aren't suitable for on-site sales, so there's no reason not to be involved. When you register, your business will be added to the ODS page on our website promoting your participation to eager shoppers. [Click here](#) to see how we're showcasing the businesses already involved.

Don't miss this opportunity to finish the year on a high by registering your participation using the link in the Upcoming Workshops & Events section below.

We look forward to your participation!

Ngā mihi mahana,

KEVIN O'LEARY
General Manager

Upcoming Workshops & Events



Join us for an evening of festive cheer Networking Event proudly hosted by Inspire
Thursday, 27th November 2025, 5:30pm
2 Civil Place, Rosedale, Auckland

Our final networking event before the end of year holidays! Come along and connect with fellow professionals, celebrate the season, and strengthen your business relationships in a relaxed and cheerful atmosphere. Don't forget to bring your business card to enter the draw for a magnum of champagne—perfect for your festive dinner table. Let's wrap up the year with great company, good conversation, and a touch of holiday sparkle!

Food and refreshments will be provided, look forward to seeing you there!

[Register Here](#)



Last Call for Our One Day Sale!
Hurry — **this is your final chance to register!**

The One Day Sale is Back – The Biggest Sales Event of the Year for North Harbour!
Saturday, 6th December 2025

Now in its 13th year, this iconic event is open to all Business North Harbour members, whether you're a retailer, wholesaler, or distributor — large or small.

For businesses unable to open their warehouses or premises to the public, we're hosting a **Pop-Up Market**, providing every business with the opportunity to showcase products and connect directly with thousands of eager shoppers.

With all participating businesses offering incredible discounts, this event provides shoppers with exclusive access to stock that's priced to sell.

This year there is also a Pop-Up Craft Market.

We can't wait to see you there! Be sure to check our website for more details.

How to Get Involved in the One Day Sale:

- **Register your business for the One Day Sale** by downloading the registration form [\[here\]](#).
- **Register for the Pop-Up Market** by downloading the registration form [\[here\]](#).

CNSST FOUNDATION

NZ YOUTH CHANGEMAKERS

CNSST Asian Alcohol Harm Prevention Forum

GUEST	VENUE	DATE & TIME
YOUTH & BUSINESS	1C1.07, INNOVATION COMPLEX BUILDING, GATE 1, MASSEY UNI. ALBANY CAMPUS	30 TH NOV 10 AM - 2 PM

STAY SOBER, SOCIALISE SAFE!

TOTAL **SOBER SMART**

CNSST Foundation warmly invites you to “Stay Sober, Socialise Safe” the Youth Changemakers CNSST Asian Alcohol Harm Prevention Forum, a community-led event bringing together Asian youth, business leaders, public health professionals, and law enforcement representatives to advance collective action on alcohol harm prevention.

Thank you to the contribution and support from the Forum partners: **Te Whatu Ora Health New Zealand, School of Social Work of Massey University, Comprehensive Care, Business North Harbour and AM936.**

This interactive forum aims to raise awareness, inspire leadership, and co-design culturally responsive strategies to reduce alcohol-related harm in Asian communities. Through dialogue between youth and businesses, the event seeks to foster a shared commitment to responsible practices, safer social environments, and stronger community wellbeing.

Programme Highlights:

- Keynote address by **Health New Zealand | Te Whatu Ora** – *Alcohol Harm and Legislation Review*
- Presentation by **New Zealand Police** – *Community Safety and Alcohol Harm*
- Panel and Ground-Floor Discussion with *Pan-Asian business owners and youth representatives*
- Networking and collaborative action planning sessions

Social Impact:

By empowering young leaders and engaging business communities, this forum aims to spark sustainable change, promoting healthier social norms, safer workplaces, and stronger intergenerational connections that contribute to long-term community wellbeing.

- **Date:** Sunday, 30th November 2025
- **Time:** 10:00 AM – 2:00 PM
- **Venue:** IC1.07, Innovation Complex Building, Gate One, Massey University Albany Campus
- **Registration online via the link [\[here\]](#)**

Registration is now open till Monday, 24th November 2025. We invite you to secure your spot at your earliest convenience.

Your participation and support will help shape a safer, healthier, and more connected future for our communities!



TE KUNENGA
KI PŪREHUROA
MASSEY
UNIVERSITY
UNIVERSITY OF NEW ZEALAND

You're Invited: Debt Bondage and Modern Slavery – A Film Screening and Panel Discussion

Hosted by the Sustainable Futures Hub, Massey University

Thursday, 20th November 2025

5:30 PM – 7:30 PM, 5:30 PM networking with light finger food and drinks

6 PM Movie, 6.30 PM to 7.30 PM Panel Discussion

Auckland Campus, Room SNW2.36 (Sir Walter Neil Building)

Click [here](#) to register

Join us for a powerful evening of film and discussion as we confront the realities of debt bondage, a pervasive form of modern slavery affecting millions worldwide.

The event will feature a screening of the short film *Of Labour and Love*, which intimately portrays the lives of two labourers in Indian brick kilns, bound by debt to their employers and local lenders. Their stories reveal the harsh disciplinary power of debt and the human cost of exploitative labour systems.

Following the screening, a panel of experts will respond to the film, offering insights into the broader implications of debt and modern slavery across diverse global contexts. This symposium invites critical reflection and dialogue on the systemic forces that perpetuate exploitation—and the pathways to justice and change.

This is a free public event. All are welcome

Past Events



On a bright spring morning on the North Shore, BNH welcomed more than 120 guests to hear from Labour leader Rt Hon Chris Hipkins. He acknowledged the tough challenges facing businesses and communities — slow economic growth, rising unemployment, high living costs, and thousands of Kiwis leaving each month. Hipkins outlined Labour’s focus on long-term solutions, emphasising support for innovative businesses, renewable energy, sustainable food production, and consistent infrastructure planning. He highlighted four priorities: jobs, health, homes, and cost of living. A Q&A with Carmel Sepuloni and Shanan Halbert rounded out the session, with strong engagement from attendees.

For more information about this event, [click here](#).



Artificial intelligence (AI) has quickly evolved from a provocative but abstract headline to practical questions for organisations of every size: “What does this mean for our business?” How do we use it to our advantage?” And, perhaps most importantly: “Where should we start?”

Business North Harbour’s first AI conference brought together more than 160 local business owners, managers, and employees. Through keynote presentations, practical demonstrations, a panel Q&A, and ideas enthusiastically exchanged around the tables, these attendees gained invaluable insights directly relevant to their own operations.

For more information about this event, [click here](#).

Buy North Harbour



Our [Buy North Harbour Facebook](#) group is growing, and we'd love you to join us. It's a **FREE** space for BNH members and associate members to promote their products and services, share knowledge, and discover exclusive member-only deals from local businesses across food, beauty, digital services, and more.

Business North Harbour is here to support you and help you stay visible, so jump in, share what you offer, and let the community discover you. Together we keep our local business community strong.

Housing Intensification (PC 120) May Affect Your Business



Auckland Council is seeking your feedback as they make changes to the Auckland Unitary Plan to allow more multi-storey buildings and housing intensification in certain areas (Plan Change 120). Depending upon their location, businesses may be affected by this intensification in a number of ways, so you need to be aware of what some of the consequences could be for your business. For example, in areas around the new Rosedale Bus Station, multi-storey buildings could be built resulting in more congestion getting in, out and around the Business Improvement District (BID), making businesses less accessible and on-street parking for your customers and employees could be reduced or used by residents. Members need to be aware of the following proposals in or near to our BID:

Upper Harbour

- Walkable catchment (buildings up to 15 storeys / about 800 metres): Albany Bus Station
- Walkable catchments (buildings up to 10 storeys / about 800 metres): Albany Metropolitan Centre, Constellation Bus Station
- Walkable catchment (buildings up to 6 storeys / about 800 metres): Rosedale Bus Station
- Local Centres (buildings up to 6 storeys / about 200 metres): Hobsonville, Albany Village

More details of Council's proposals are available [here](#) and you can make your submission using the following link [Plan Change 120 | AK Have Your Say](#)

Rosedale Bus Station Update



Auckland Transport (AT) has confirmed that construction of Rosedale Bus Station, between the Albany and Constellation stations, will commence in early 2026. A project update, link to the project website and AT's contact information are available [here](#).

Prior to construction starting, in partnership with AT, BNH will hold a drop in session for affected businesses providing an opportunity for people to pop in, have a look and ask questions, get answers, or provide insights. BNH will keep members informed about this session once a date has been confirmed.

Latest Information From Business.govt.nz



The [business.govt.nz](#) and other Government sources provide the latest information for businesses.

- [Don't ignore your tax debt](#)
- [Check your health and safety practices](#)
- [Are you a potential food or fibre exporter?](#)
- [Get help with exporting challenges](#)
- [Want better results from AI?](#)
- [Get your business naturing with DOC](#)
- [Granny flat law changes in 2026](#)
- [Landlords: Changes coming 1st December](#)
- [New visa opens doors to overseas investors](#)
- [eInvoicing and payment rule changes](#)

If you have any questions or need support please contact the Ministry of Business, Innovation and Employment (MBIE)'s phone line for small businesses: Freephone **0800 424 946**

Every Moment Matters



When every moment matters...

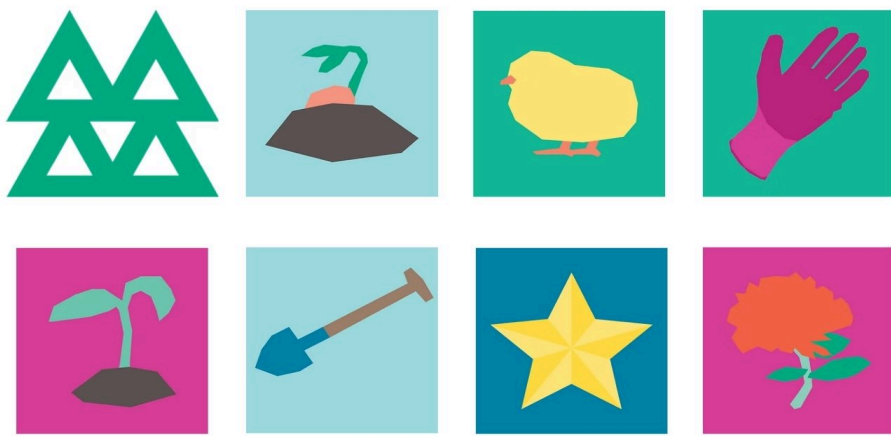

[wellfoundation.org.nz/icu](https://www.wellfoundation.org.nz/icu)

Donate now

Help fund family spaces at Waitākere Hospital's new Intensive Care Unit, so West Auckland families can be close to loved ones receiving critical care.

We're grateful to share that our public appeal just launched Tuesday. This appeal is centred on creating family spaces in the new ICU at Waitākere Hospital, places where loved ones can rest, gather their strength, and stay close when every moment truly matters. We invite you to [click here](#) to learn more, and if it feels right, to support or share it so more families can stay connected through the hardest times. Thank you for standing with us as we work to bring world-class intensive care to West Auckland and comfort to those who need it most.

Te Hōnonga A Iwi Christmas Gift Guide



This Christmas, skip the shopping malls and choose a gift that allows your employees, business partners, friends and family to give back to nature. Every gift you purchase from the Te Hōnonga a Iwi Christmas gift guide helps restore native ecosystems, support biodiversity, and strengthen our community's connection to Rosedale Park. Click [here](#) to learn more.

A Decade Of Grins



For ten years, Grin has celebrated the simple joy behind every smile. Since 2015, we've stayed true to one mission: helping families make healthier, happier choices through safe, natural products. From our first corn-starch toothbrush to toothpaste made with nature's best ingredients, every step has been shaped by your trust and the moments you've shared with us—children discovering the fun of brushing, families choosing gentler care, and people finally finding relief from tooth sensitivity.

Thank you for believing in what we do and for welcoming us into your daily routines. Here's to the next decade of brighter smiles, better choices, and continuing this journey together with gratitude.

Wallace Cotton - 20 Years Of Comfort And Style



Wallace Cotton celebrates twenty years of creating beautiful and comfortable everyday living, staying true to the belief that home should feel special and cared for. From simple beginnings at a kitchen table to a brand loved across New Zealand and beyond, their journey has been shaped by natural materials, thoughtful design and products made to last. Over the years, their customers have become part of their story, valuing the warmth, authenticity and familiar comfort the brand brings into homes, often across several generations. To honour this milestone, Wallace Cotton is releasing a special anniversary collection featuring the much loved hydrangea pattern chosen by customers, a heartfelt expression of gratitude for the loyal community who has supported them, the dedicated team behind every product and the idea that started it all.

Thank you to our 2025-2026 PLATINUM PARTNERS



Thank you to our 2025-2026 GOLD PARTNERS



Thank you to our 2025-2026 SILVER PARTNERS



CONTACT: 09 968 2222 WEBSITE: www.businessnh.org.nz

EMAIL: admin@businessnh.org.nz OFFICE: Level 1, Unit 2, 322 Rosedale Road, Rosedale

POSTAL: PO Box 303126, North Harbour

Buy North Harbour